

TOOLS NEEDED

- 14mm socket
- 19mm socket
- 22mm socket
- 24mm socket
- 5/8 wrench
- 14mm wrench
- 19mm wrench
- 22mm wrench
- 24mm wrench
- Lug nut socket
- 4 ton floor jack
- 2 Jack stands
- 2 Wheel chocks

BILL OF MATERIALS

- M03800 x 2 spacers
- BU76093 x 1 hardware
 - ◆ S11105 x 8 stud extenders
 - ◆ P11153 x 1 thread lock



2007 Toyota Tundra 3" front lift kit 2WD & 4WD Part KT09125



www.Daystaproduts.com

Tech Support Contact Info

Tech@DaystarWeb.com

Phone: 623.907.0081

Fax: 623.907.0088

841 South 71st Avenue

Instruction Sheet P11258

2007 Daystar Products International Inc.

Thank you for choosing Daystar Products

Daystar recommends a certified technician install this system . In addition to these instructions, professional knowledge of disassemble/reassembly procedures as well as post instructions checks must be known. Attempts to install this system without this knowledge and expertise may jeopardize the integrity and/or operating of the vehicle.

Please read all the instructions before beginning the installation. Check the kit hardware against the parts list. Be sure you have all the needed parts and understand where they go. If anything is missing , do not proceed with the installation, Call Daystar Products to obtain needed items. Torque specs are on page 5.

Product Use Information

As a general rule, the taller a vehicle is the easier it will roll. We strongly recommend , because of rollover possibility, that seat belts and shoulder harness be worn at all times. Avoid situations where a side rollover may occur.

Braking performance and capabilities are decreased when significantly large/heavier tires and wheels are used. Take this into consideration while driving. Also, speedometer recalibration is necessary when larger tires are installed.

Do not add, alter, or fabricate any factory or after-market parts which increase vehicle height over the intended height of the Daystar Product purchased. Mixing component brands, lifts, and/or combining body lift with

Notice to Dealer and Vehicle Owner

Any vehicle equipped with any Daystar Product must have the “Warning to driver” decal installed on the sun visor or dash. The decal is to act a constant reminder for whoever is operating the vehicle of its unique handling characteristics. **INSTALLING DEALER**— It is your responsibility to install the warning decal and forward these instructions on to the vehicle owner for review and to be kept in the vehicle for service life.

After installation occurs, a qualified alignment facility is required to align the vehicle to factory specs.

- Using a 24mm socket tighten the inner lower control arm bolts.



- Reinstall the tires and tighten the lugs to 85 ft lbs. Jack up the truck and remove the jack stands. Lower Jeep back to the ground .
- With the truck on the ground install the sway bar end-link. Using a 19mm socket tightened the bolt.



- Install “Warning to driver” decal to sun visor.
- Check all bolts and nut that they are installed and tighten down.
- The vehicle must be aligned by a certified alignment center.
- Headlights will need to be adjusted to factory specs.
- Wheels must be retightened at 50 miles.
- All components must be retightened at 500 miles and then at 3000 miles.

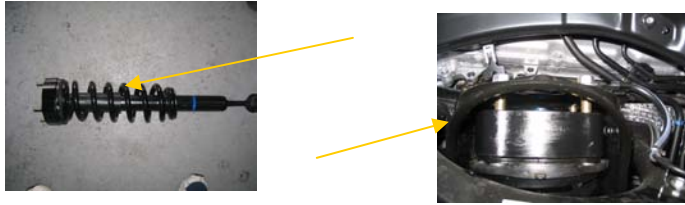
Torque Specification

- Upper strut nuts, 33 ft lbs x 4 per side
- Lower strut bolt/nuts, 144 ft lbs x 1 per side
- Lower sway bar bolt, 89 ft lbs x 1 per side
- Lower ball joint bolts, 221 ft lbs x 2 per side
- Inner lower control arm bolts, 207 ft lbs x 2 per side

- Put thread lock on the 8 (S11105) stud extenders and using a 5/8 wrench install them on the strut, then install the strut spacer(M03800) over the stud extenders.



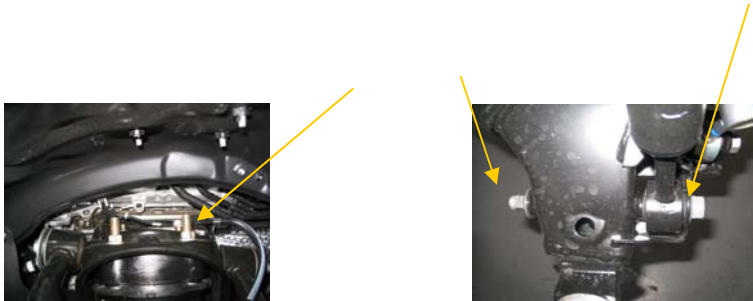
- Install the strut assembly with the spacer installed back into the truck and put the 4 upper strut nuts on to hold the strut from falling out.



- Raise the lower control arm so that the lower strut bolt/nut can be installed. Put thread lock on the 2 lower ball joint bolts.
- Using a 24mm socket install the lower ball joint bolts into the control arm/knuckle assembly and tighten.



- Using a 5/8 wrench tighten the upper strut nuts. With a 22mm socket and wrench tighten the lower strut bolt and nut.



Installation steps

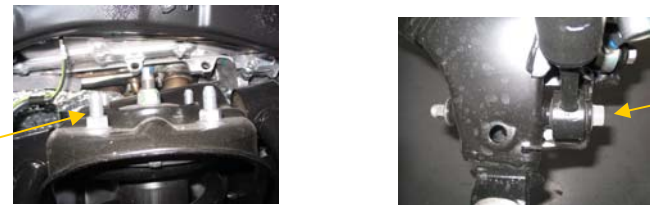
- The tools needed for installation are on the back cover. A list of parts in the kit are under the tool listing. Make sure you have all of the proper tools and understand these directions before proceeding.
- Place the truck on a clean level surface and set the parking brake. Chock the rear wheels and using a floor jack raise the front of the truck and support the truck with approved jack stands under the frame rail behind the front wheels. **NEVER WORK UNDER AN UNSUPPORTED VEHICLE.** Using a 21mm deep well socket remove the front wheels.
- Disconnect the front sway bar lower end links using a 19mm socket.



- Loosen the two inner lower control arm pivot bolt using a 24 mm socket.



- Place a floor jack under the lower control arm and support the arm, using a 14mm socket remove the upper strut nuts. Using a 22mm socket and wrench remove the lower strut bolt and nut.



- Using a 24mm socket remove the lower ball joint bolts and lower the control arm down, to remove the strut assembly.

